

# Tropical Rock Oyster Research

## About the project

We will support food safety in the emerging tropical rock oyster (TRO) industry in northern Australia. Our focus is on *Vibrio* bacteria that occur naturally in warm waters and if present in harvested shellfish may cause illness when eaten uncooked.

## FRDC Project 2020-043

Toxigenic *Vibrio* baselines and optimum storage, transport and shelf-life conditions to inform cold supply chains in the north Australian Tropical Rock Oyster industry.  
2021 - 2023

## We will also

- Identify the impact of location and season on *Vibrio* abundance within TRO.
- Identify and inform industry of suitable storage and transport temperatures to reduce *Vibrio* growth and increase shelf life in TRO.

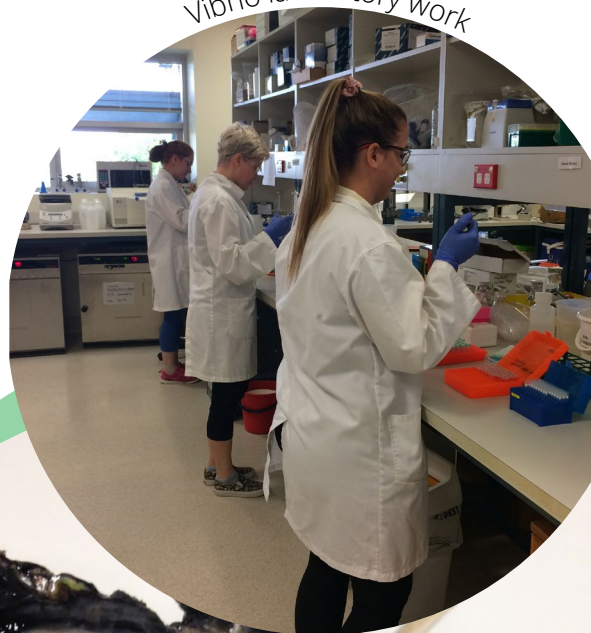
## Project deliverables

- Identify potential microbiological/human health risk in the TRO industry;
- Storage, transport and shelf life protocols for Tropical Rock Oysters;
- Guidelines to inform *Vibrio* risk management planning and future actions required.

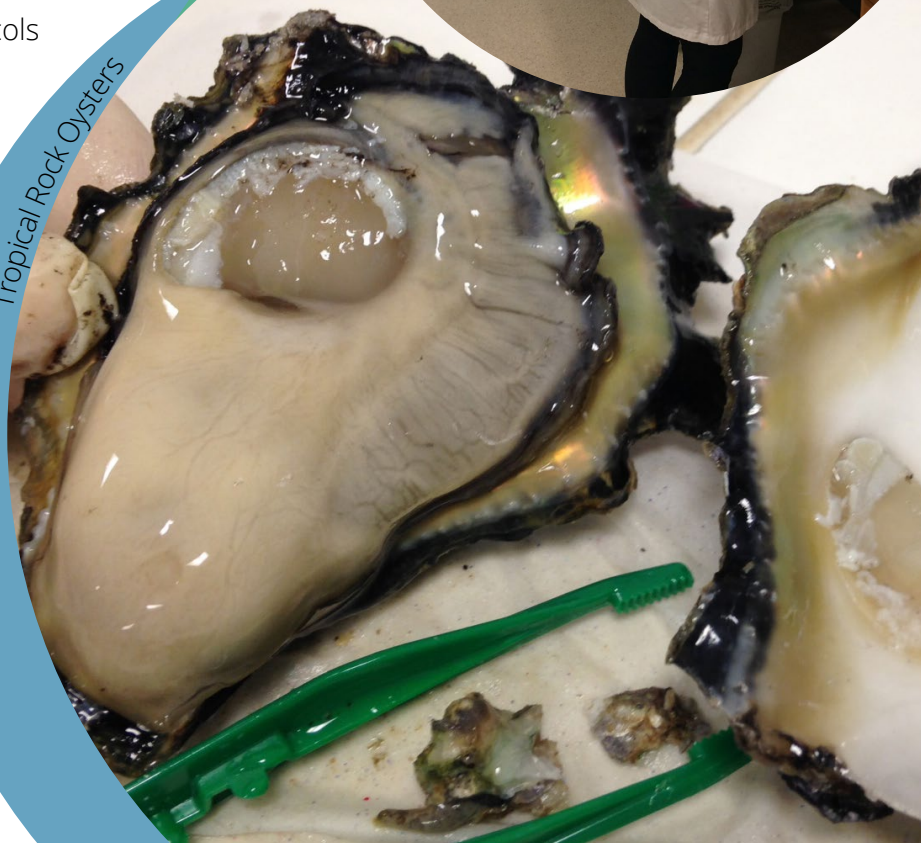
This project is funded by the Fisheries Research Development Corporation.



Vibrio laboratory work

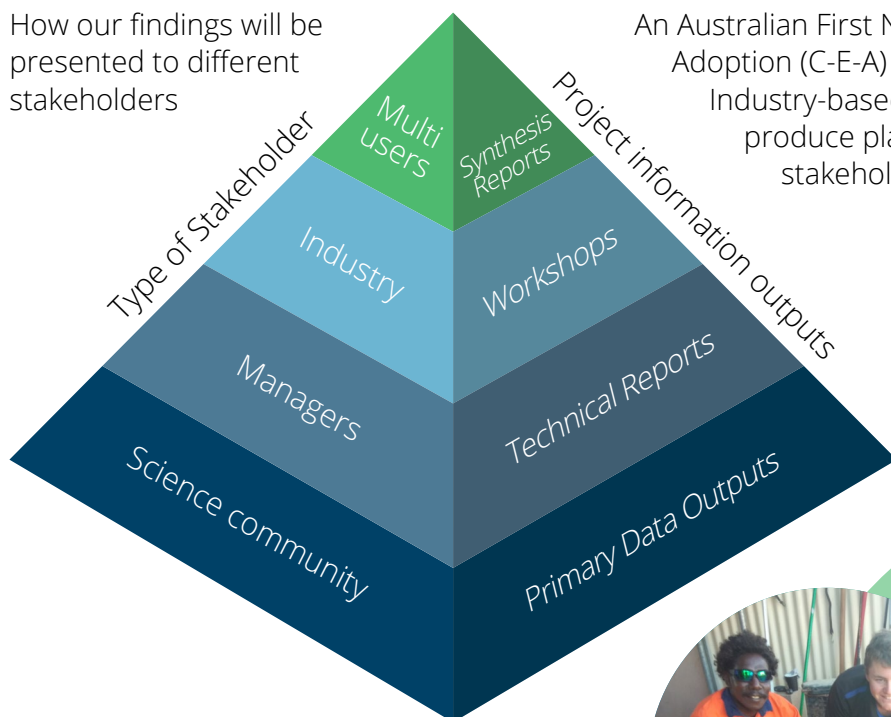


Tropical Rock Oysters



# How we will communicate

How our findings will be presented to different stakeholders



An Australian First Nations Communication-Extension-Adoption (C-E-A) Leader will hold workshops with Industry-based Indigenous stakeholders and produce plain language synthesis reports for all stakeholders.

Together we will ensure the TRO industry has exemplar food safety practices, providing quality assurance and access to premium markets.



## Project oversight

Steering Committee chaired by the FRDC and includes:

- Yagbani Aboriginal Corporation (NT)
- Bowen Fresh Oysters (Qld)
- Maxima Rock Oyster Company (WA)
- NT, WA and Qld health, agriculture, and fisheries government agencies.

## Researcher organisations



### For more information

**General** Ms Cynthia Coyne, C-E-A Project Leader  
[cynthia.coyne@cdu.edu.au](mailto:cynthia.coyne@cdu.edu.au)  
 08 89467192; 0476 920 896

**Scientific** Professor Karen Gibb, Project Leader  
[karen.gibb@cdu.edu.au](mailto:karen.gibb@cdu.edu.au)  
 0421 194 455